



10036 Aurora-Hudson Road
Streetsboro, Ohio

50,140 Square Feet Available For Lease



Features:

YEAR BUILT:	1998
USE:	Office, Industrial
OFFICE AREA:	12,810 s.f.
DOCKS:	2
DRIVE-INS:	3
BAYS:	40 x 40 Feet
CEILING HEIGHT:	18 Foot
SPRINKLERS:	Wet System
WAREHOUSE HEAT:	Gas Fired Air Rotation

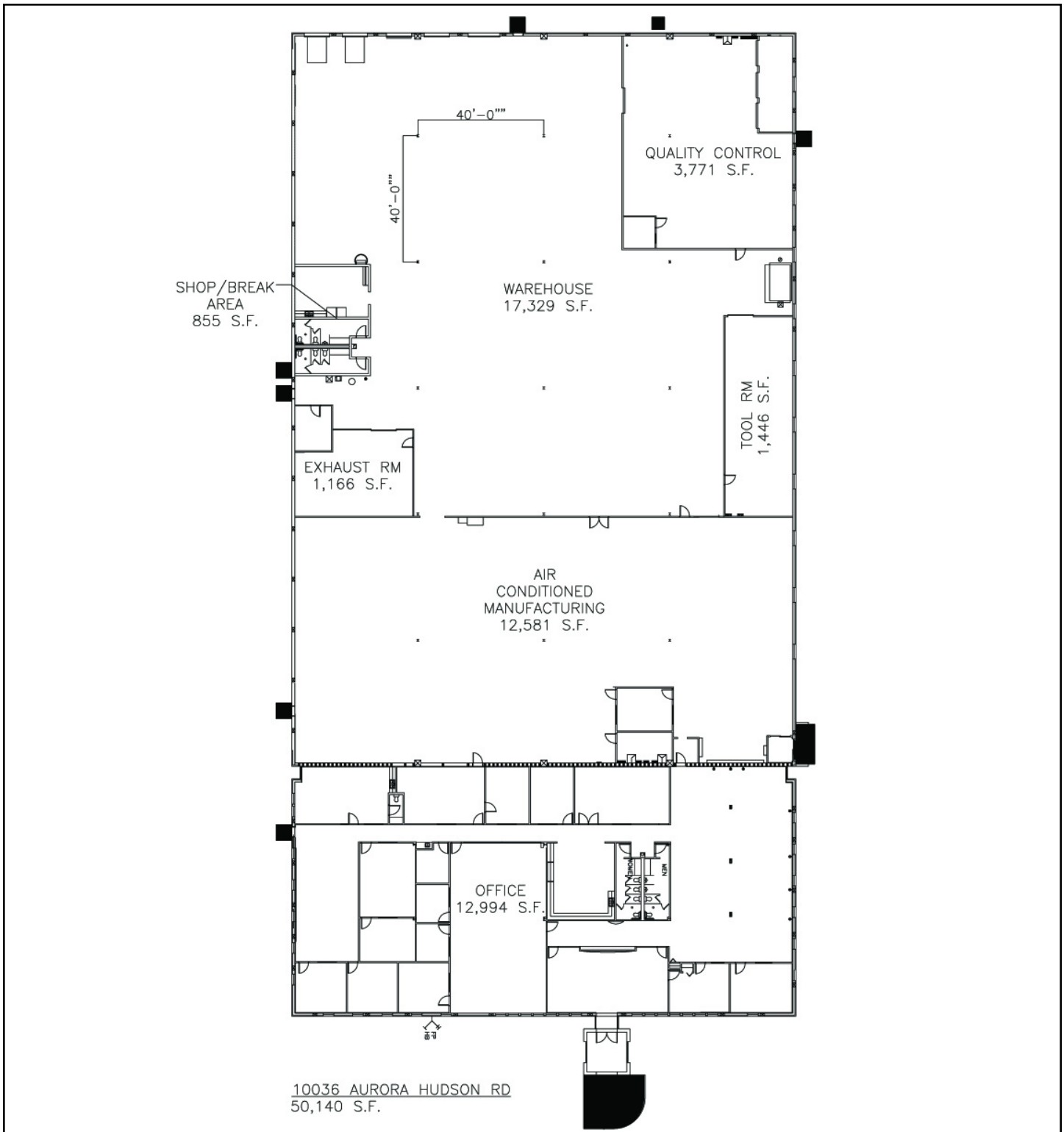
Located in Streetsboro, Ohio, just 25 minutes from downtown Cleveland, this property offers high freeway visibility and convenient access to Interstates 480 and 80 (Ohio Turnpike).



Contact Joseph Greenberg or David Stecker
joseph@chelmproperties.com dstecker@chelmproperties.com



an affiliate of Chelm Properties, Inc.
(440) 349-4300 or (440) 424-0114



10036 Aurora-Hudson Road

Streetsboro, Ohio

50,140 Square Feet Total
12,810 Square Feet of Office
37,330 Square Feet Warehouse

Contact **Joseph Greenberg** or **David Stecker**
joseph@chelmproperties.com dstecker@chelmproperties.com



an affiliate of Chelm Properties, Inc.
(440) 349-4300 or (440) 424-0114