



CHELM PROPERTIES, INC.

Aerospace Technology Park
3000 Aerospace Parkway
Brook Park, Ohio



Facts

USE: Office, R & D, Laboratory, Call Center
RENTABLE AREA: 26,892 Square Feet
STORIES: 1
RECEIVING AREA: 2 Grade Level Overhead Doors
PARKING: Ample Surface Parking

Located in Aerospace Technology Park and adjacent to NASA Glenn Research Center, Cleveland Hopkins International Airport and the Cleveland Metro Parks, this high image 26,892 square foot office/lab complex is ideal for various office, laboratory or research uses.

Aerospace Techpark is a business and technology park offering high quality office, research and light warehouse facilities to a diverse mix of corporate users. The park is just minutes to Interstates 71 and 480 via Aerospace Parkway.



Aerospace Technology Park
3000 Aerospace Parkway
Brook Park, Ohio

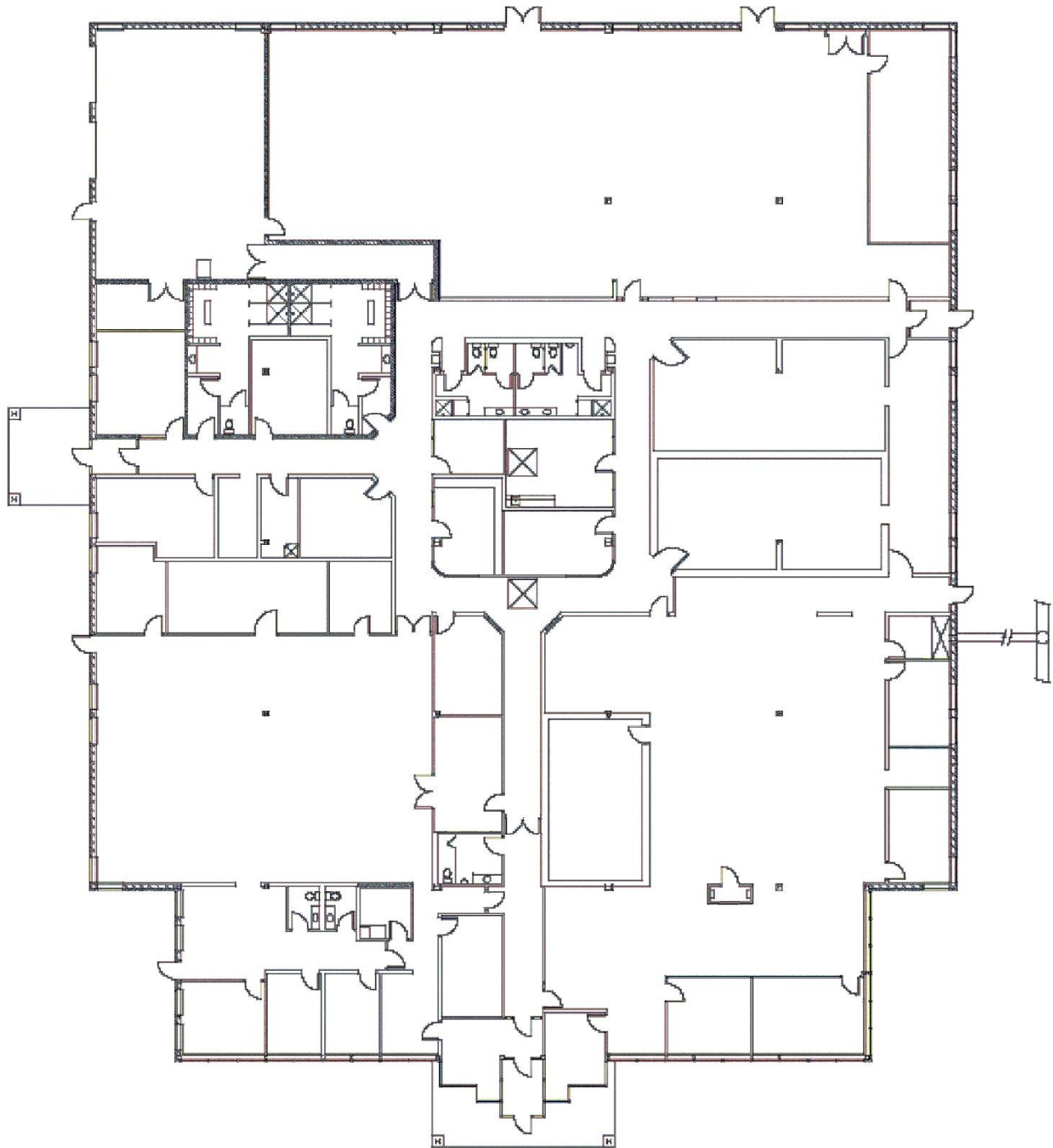
26,892 Square Feet of Office/Lab Available for Lease



This high image office/lab facility is located at Aerospace Technology Park, in Brook Park, Ohio. The park is conveniently situated adjacent to NASA's Glenn Research Facility, the International Exposition (IX) Center and Cleveland Hopkins International Airport.

The building is single story and contains a total of 26,892 square feet. Features include both private and open offices, laboratories, conference facilities, receiving area with two overhead doors as well as advanced communications capability. The park is just minutes to Interstates 71 and 480 via Aerospace Parkway.





CHELM PROPERTIES, INC.

(440) 349-4300 Fax: (440)349-4371
www.chelmproperties.com

26,892 Square Foot Office/Lab Facility
3000 Aerospace Parkway
Brook Park, Ohio

Real Estate Management and Development

WWW.CHELMPROPERTIES.COM

31000 Aurora Road

Solon, Ohio 44139

(440) 349-4300 phone

(440) 349-4371 fax