

# AEROSPACE TECHNOLOGY PARK





# PROPERTY HIGHLIGHTS



## **TOTAL BUILDING**

89,676 SF



## **AVAILABLE SPACE**

**OFFICE** – 7,932 SF

**LAB** – 6,521 SF

**LAB** – 3,455 SF



## **YEAR BUILT**

1989



## **BASE RENT**

**OFFICE:** \$17.50/SF

**LAB:** \$12.00/SF



## **CONSTRUCTION TYPE**

Pre-cast Concrete / Insulated Metal / Masonry & Glass



## **HVAC SYSTEM**

Central Zoned System



## **PARKING SPACES**

5.5 / 1,000 SF (Plus)



## **COMMUNICATION**

Fiber / Fully Wired



## **COMMON AREA FACTOR**

11.17%



## **ADDITIONAL COSTS**

In-suite electric and cleaning

# AEROSPACE TECHNOLOGY PARK



**CHILM** PROPERTIES, INC.



## LOCATION OVERVIEW



This cornerstone of the Aerospace Technology Park is a state-of-the-art office/research facility with advanced communications capabilities, is designed with ultra quiet construction and a continuous-glass-line. HVAC is individually zoned VAV.

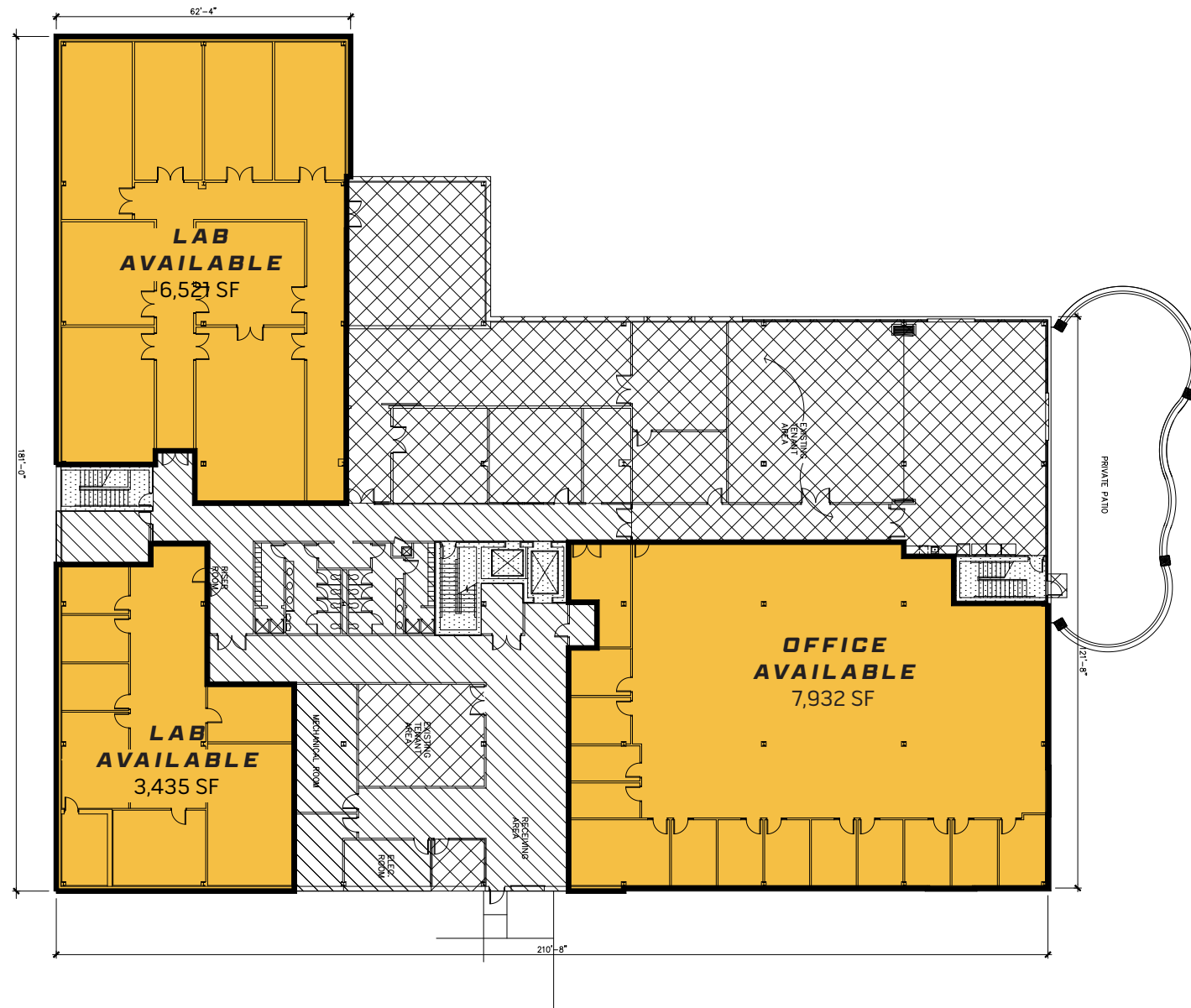


The building is located adjacent to NASA's Glenn Research Facility, near Cleveland Hopkins Airport, minutes from I-71, I-480, hotels, restaurants and shopping areas.



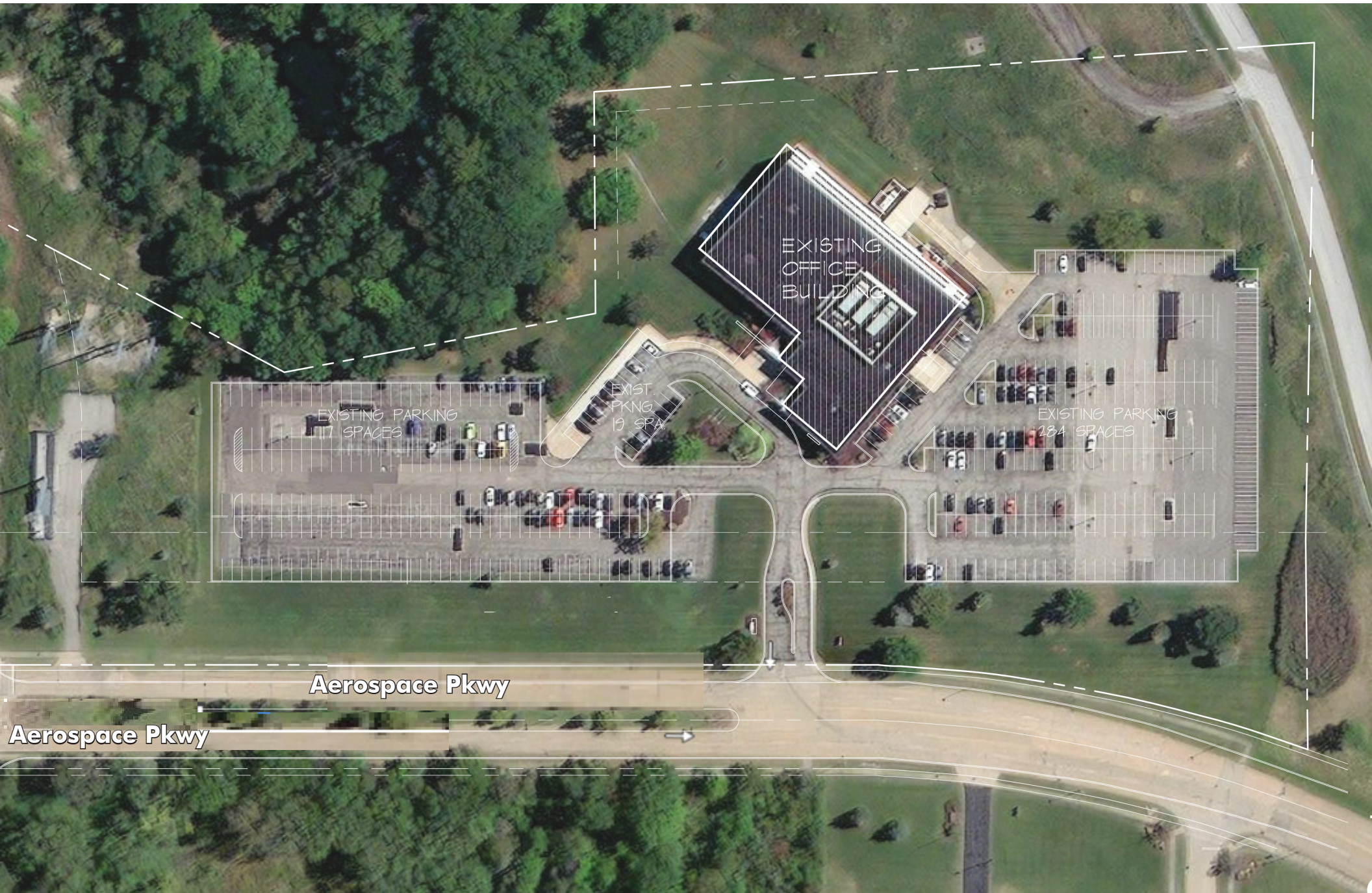


# LOWER LEVEL PLAN



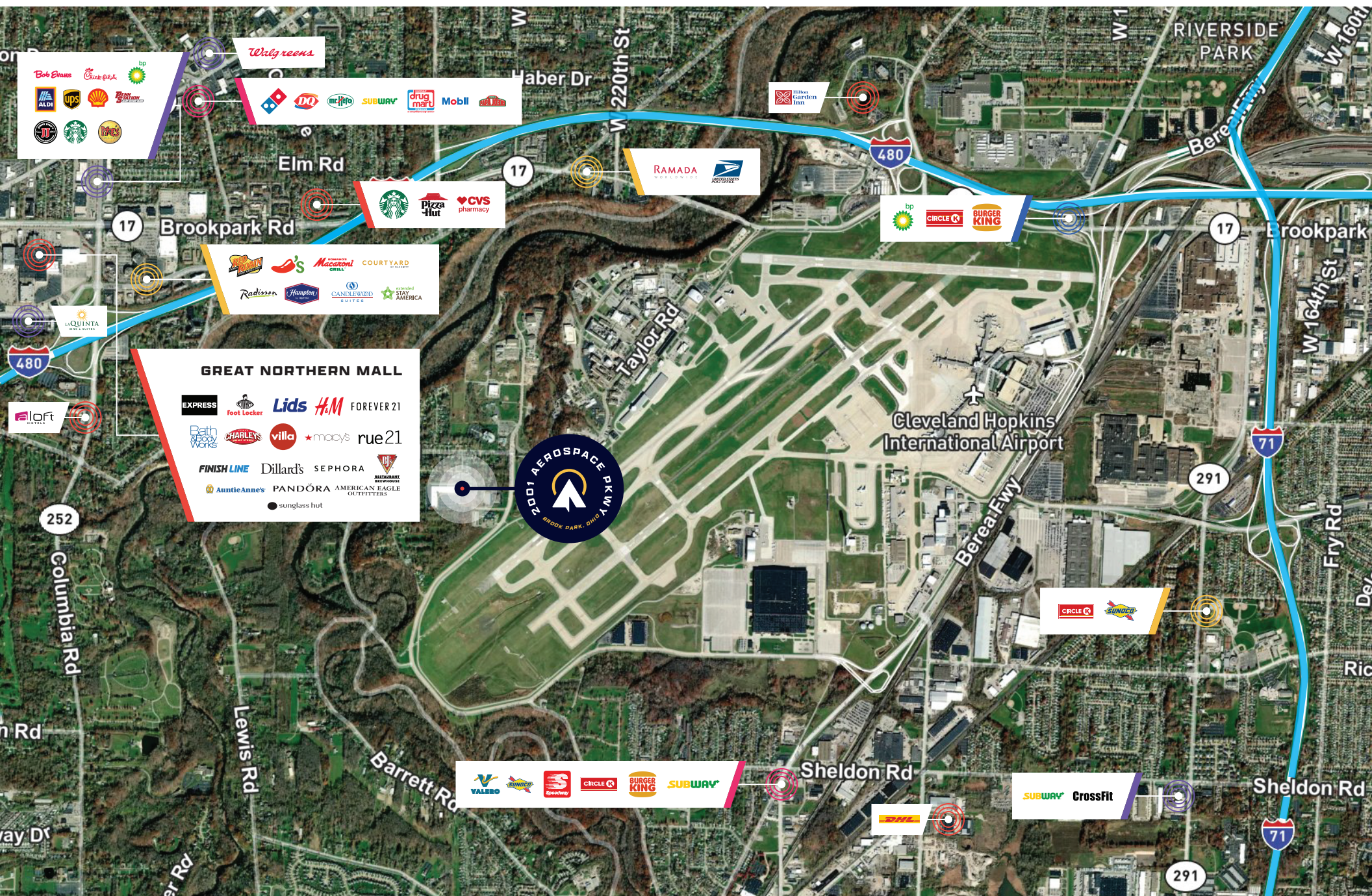


# PARKING PLAN





# AREA MAP







**BOB LEIBOLD**

*Vice President*

+1 216 363 6449

robert.leibold@cbre.com



©2022 CBRE, Inc. All rights reserved. This information has been obtained from sources believed reliable, but has not been verified for accuracy or completeness. You should conduct a careful, independent investigation of the property and verify all information. Any reliance on this information is solely at your own risk. CBRE and the CBRE logo are service marks of CBRE, Inc. All other marks displayed on this document are the property of their respective owners, and the use of such logos does not imply any affiliation with or endorsement of CBRE. Photos herein are the property of their respective owners. Use of these images without the express written consent of the owner is prohibited. PMStudio\_June2022

**CBRE**